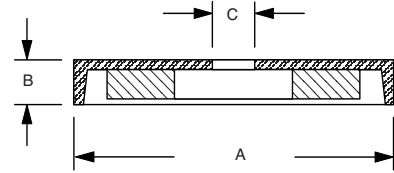


CERAMIC MAGNETIC CUP ASSEMBLIES

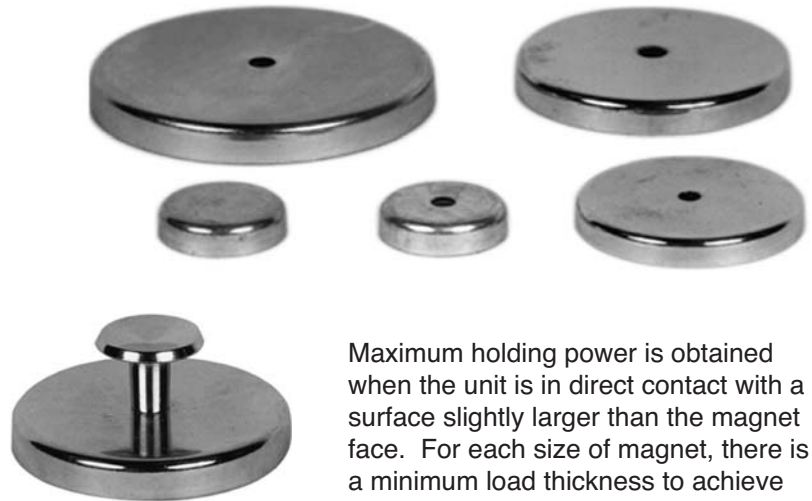
A permanent magnet bonded in a round, brightly-plated steel cup gives these assemblies added holding power. Post notes and announcements on any steel surface or use as fixturing magnets to hold parts in place. Quantity discounts available.



PRODUCT NUMBER	A	B	C	POWER (LBS)
MA-125-H	1.42	.28	.187	7
MA-175-H	2.06	.32	.187	10
MA-238-H	2.65	.38	.250	25
MA-238-BH	2.65	.38	.375	25
MA-287-H	3.20	.44	.281	50
MA-338-H	3.75	.50	.313	90
MA-454-H	4.90	.50	.500	120

MODELS WITH HANDLE

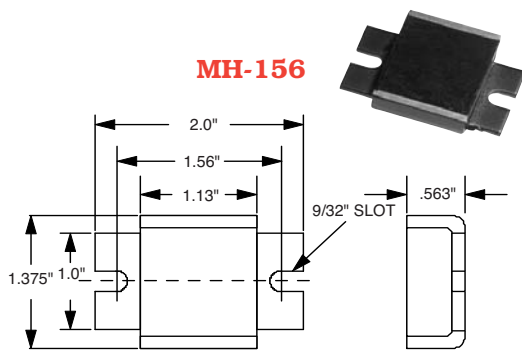
MA-125-HH	1.50	.28	----	7
MA-175-HH	2.06	.32	----	10
MA-238-HH	2.65	.38	----	25
MA-287-HH	3.20	.44	----	50
MA-338-HH	3.75	.50	----	90
MA-454-HH	4.90	.50	----	120



Maximum holding power is obtained when the unit is in direct contact with a surface slightly larger than the magnet face. For each size of magnet, there is a minimum load thickness to achieve maximum holding power.

HORSE SHOE MAGNET ASSEMBLIES

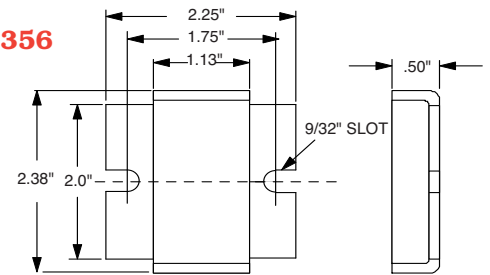
These magnets are ideal for holding tools, mounting in fluid reservoirs, as conveyor rails, etc.



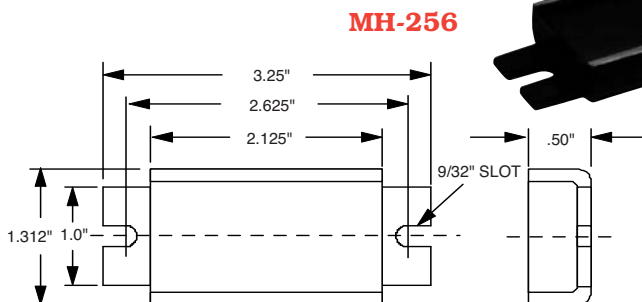
Holding Power: 18 lbs.



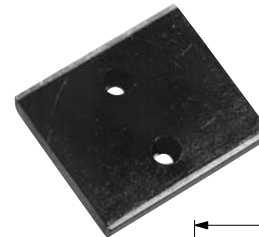
MH-356



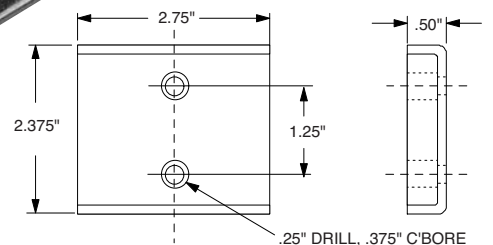
Holding Power: 31 lbs.



Holding Power: 31 lbs.



MH-856



Holding Power: 60 lbs.