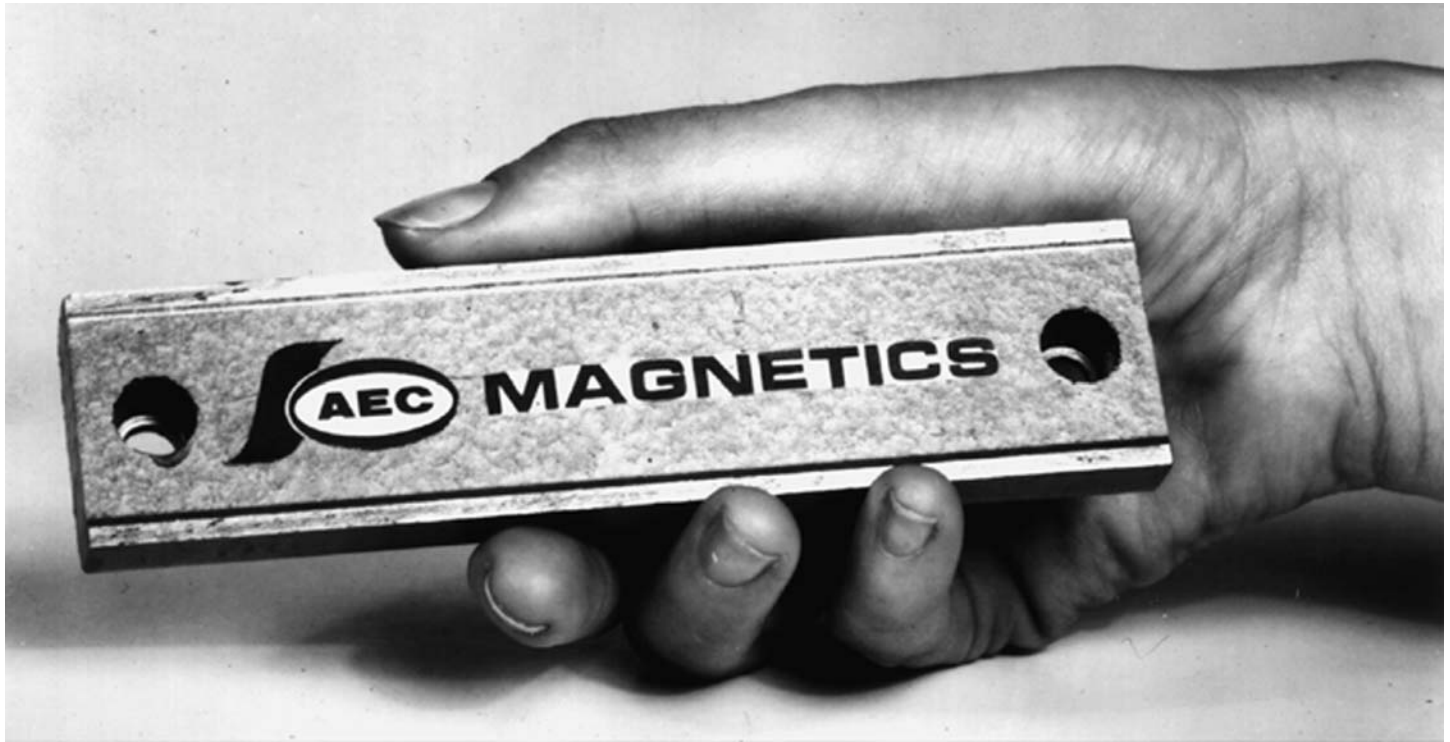
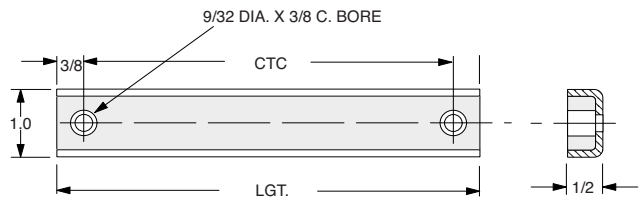


# PERMANENT CERAMIC MAGNETIC RAILS

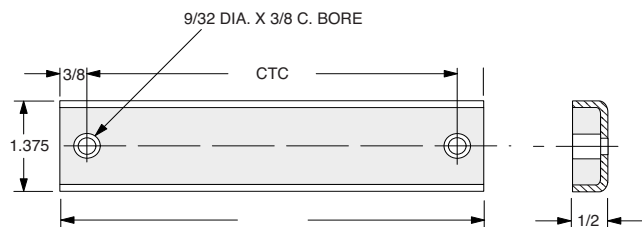


Ideal for holding materials on conveyors, press work, paint racks, fixtures, display units, engineering rooms, tool holders, etc. Other lengths are available.

PRODUCT NUMBER	LENGTH	CTC	POWER (LBS)
MH-1010-4	4	3.25	34
MH-1010-6	6	5.25	51
MH-1010-8	8	7.25	68
MH-1010-12	12	11.25	78
MH-1010-18	18	17.25	117



PRODUCT NUMBER	LENGTH	CTC	POWER (LBS)
MH-1037-33	3.37	2.625	32
MH-1037-55	5.50	4.750	62
MH-1037-6	6.00	5.250	62
MH-1037-8	8.00	7.250	91
MH-1037-12	12.00	11.250	161
MH-1037-18	18.00	17.250	270



PRODUCT NUMBER	LENGTH	CTC	POWER (LBS)
MH-1237-4	4	3.25	112
MH-1237-6	6	5.25	168
MH-1237-8	8	7.25	224
MH-1237-12	12	11.25	336
MH-1237-18	18	17.25	504

