

CIRCULAR ELECTROMAGNETIC LIFTS

110 VOLT DC CONTINUOUS DUTY

FEATURES:

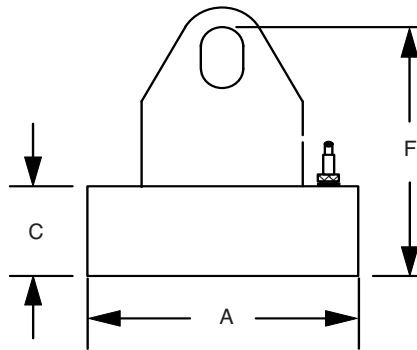
- FULL WELDED CONSTRUCTION
- ALL COPPER WOUND COILS
- CLASS H INSULATION THROUGHOUT
- STAINLESS STEEL FACE PLATES ARE STANDARD ON THE 8", 10", 12", AND 16" LIFTS AND OPTIONAL ON OTHERS



LC TYPE LIFT UTILIZING A REMOTE POWER SUPPLY



LCR TYPE LIFT HAS THE MANUAL POWER SUPPLY WITH AN "ON-OFF-RELEASE" SWITCH MOUNTED DIRECTLY ON THE MAGNET



MAXIMUM PLATE SIZE FOR ONE LC MAGNET THICKNESS

LC-600	2' X 4'	12 GA. - 3.5"
LC-800	3' X 5'	12 GA. - 4.0"
LC-1000	4' X 6'	12 GA. - 4.5"
LC-1200	5' X 7'	.250" - 4.5"
LC-1600	6' X 8'	.375" - 4.5"

110VDC Continuous Duty Cycle

LC TYPE PRODUCT NUMBER	A	C	F	WATTS	WEIGHT	MAX. LOAD WORKING	CAPACITY TEST	LCR TYPE PRODUCT NUMBER
LC-600 - 110C	6.0	3.00	7.5	44	22	750	1500	LCR-6-110C
LC-800 - 110C	8.0	4.00	9.0	80	50	2000	4000	LCR-8-110C
LC-1000-110C	10.0	4.25	13.5	240	100	3000	6000	LCR-10-110C
LC-1200-110C	12.0	4.25	13.5	403	138	4000	8000	LCR-12-110C
LC-1600-110C	16.0	4.25	18.7	480	330	8000	16000	LCR-16-110C