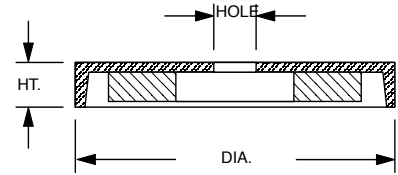


CERAMIC MAGNETIC CUP ASSEMBLIES

A permanent magnet bonded in a round, brightly-plated steel cup gives these assemblies added holding power. Post notes and announcements on any steel surface or use as fixturing magnets to hold parts in place. Quantity discounts available.



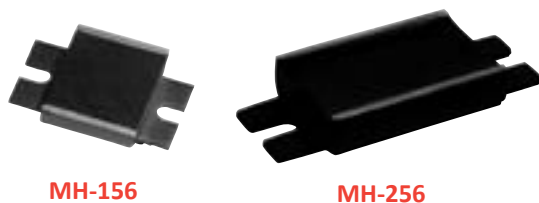
PRODUCT NUMBER	DIA.	HT.	HOLE	HANDLE	POWER (LBS)
MA-125-H	1.42	.28	.187	NO	15
MA-125-HH	1.50	.28	---	YES	15
MA-175-H	2.06	.32	.187	NO	35
MA-175-HH	2.06	.32	---	YES	35
MA-238-BH	2.65	.38	.375	NO	80
MA-238-H	2.65	.38	.250	NO	80
MA-238-HH	2.65	.38	---	YES	80
MA-287-H	3.20	.44	.281	NO	110
MA-287-HH	3.20	.44	---	YES	110
MA-338-H	3.75	.50	.313	NO	120
MA-338-HH	3.75	.50	---	YES	120
MA-454-H	4.90	.50	.500	NO	210
MA-454-HH	4.90	.50	---	YES	210



Maximum holding power is obtained when the unit is in direct contact with a surface slightly larger than the magnet face. For each size of magnet, there is a minimum load thickness to achieve maximum holding power.

HORSE SHOE MAGNET ASSEMBLIES

These magnets are ideal for holding tools, mounting in fluid reservoirs, as conveyor rails, etc.

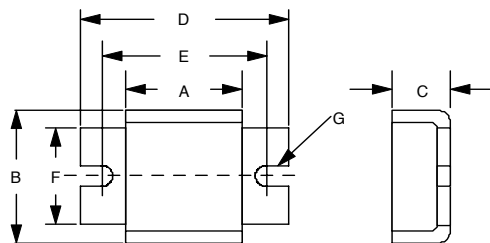
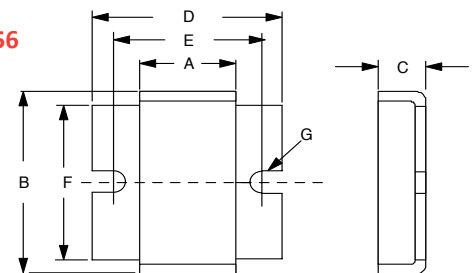


MH-156

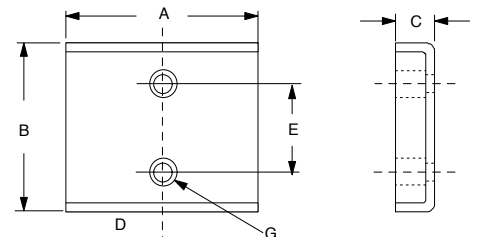
MH-256



MH-356



MH-856



PRODUCT NUMBER	DIMENSIONS-(IN)							WGT.	POWER (LBS)
	A	B	C	D	E	F	G		
MH-156	1.130	1.375	0.563	2.000	1.560	1.000	.281	.06	18
MH-256	2.125	1.312	0.500	3.250	2.625	1.000	.281	.08	31
MH-356	1.130	2.380	0.500	2.250	1.750	2.000	.281	1.0	31
MH-856	2.750	2.375	0.500	1.375	1.250	-----	.281	1.2	60