

INSTALLATION:

USE THREADED HOLES IN THE BACK OF ELECTROMAGNET TO MOUNT. APPLY 24 VOLTS DC TO LEADS. POLARITY IS UNIMPORTANT AS ELECTROMAGNETS WORK EQUALLY WELL IN FORWARD OR REVERSE POLARITY.

MAINTENANCE INSTRUCTIONS:

ELECTROMAGNETS REQUIRE VERY LITTLE MAINTENANCE TO PROVIDE A LONG USEFUL LIFE. DAILY USE OF A SHOP TOWEL TO WIPE THE FACE OF THE MAGNET FREE OF DEBRIS, GREASE AND OIL OR OTHER FOREIGN MATTER WILL ENSURE YEARS OF SERVICE LIFE AND THOUSANDS OF SAFE LIFTS.



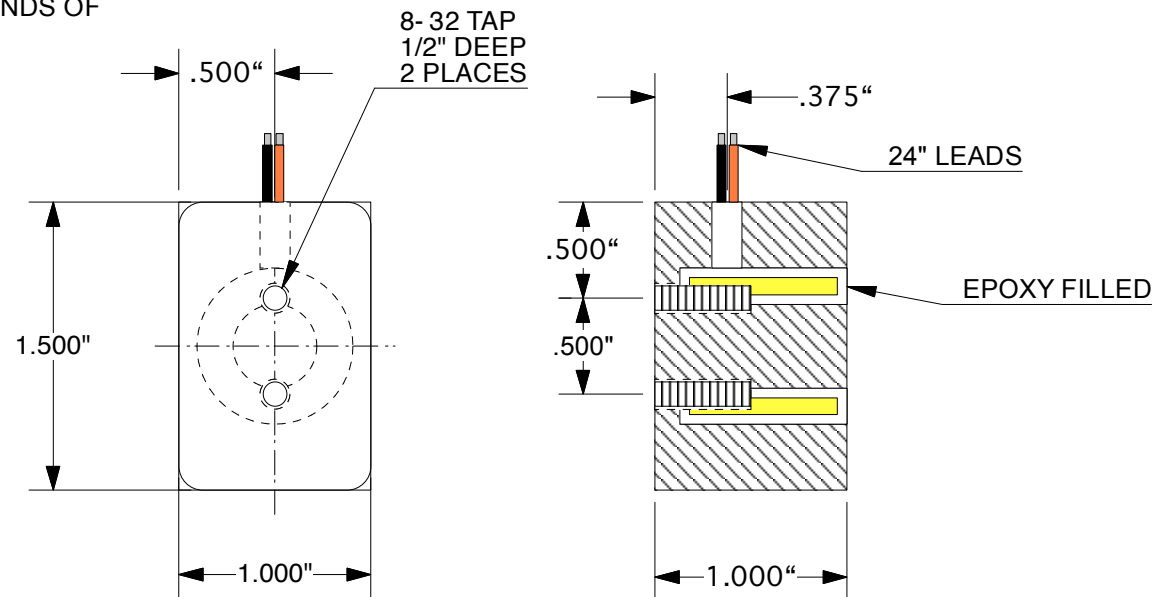
**MAGNETICS**

AUTOMATIC EQUIPMENT CORPORATION  
4699 INTERSTATE DR, CINCINNATI, OHIO 45246  
PHONE: (800) 635-3954 FAX: (800) 635-3955

E-MAIL: aec@aecmagnetics.com ON-LINE: www.aecmagnetics.com

**MAGNETIC SPECIALISTS FOR AUTOMATED MANUFACTURING**

MODEL: EM-1015-24C  
VOLTAGE: 24VDC  
CURRENT: 8 WATTS  
DUTY CYCLE: CONTINUOUS  
HOLDING POWER: 70 LBS



IF YOU HAVE ANY QUESTIONS ABOUT THIS MAGNET OR THE CORRESPONDING DC POWER SUPPLY, PLEASE CALL OUR ENGINEERING DEPARTMENT FOR ASSISTANCE: (1-800-635-3954)

AUTOMATIC EQUIPMENT CORP  
EM-1015-24C  
CUST DWG  
11/21/13  
H-13179